



..... **PCMS-1210/PCMS-1210QS**

Ver-Mac's PCMS-1210/PCMS-1210QS are 3-line and 8 characters per line trailer-mounted portable changeable message signs. They feature the Opti Power lens, Tilt-and-Rotate solar panels, JamLogic fleet management software (modem required) and optional Stealth Technology. Both units combine energy-efficient design and high-quality construction to provide the most reliable and cost-effective message signs on the market. PCMS-1210 comes with our NTCIP-compliant V-Touch controller and PCMS-1210QS with a hand-held controller. PCMS-1210 and PCMS-1210QS are the perfect 3-line models to be used for highway construction projects.

V-TOUCH CONTROLLER

Ver-Mac's PCMS-1210 comes with our innovative V-Touch controller, the industry's most functional and easy-to-use controller!

- **NTCIP compliant**
- **Easy-to-read** – 7-inch (178 mm) color LCD pressure-sensitive display screen
- **User-friendly** – one-click icon-based menu items
- **Time-saving** – create your own library of messages
- **Simple to operate** – the intuitive point-n-go icons ensure quick and easy commands to display or edit messages
- **Additional functionalities** – scheduling, sign diagnostics, pin-protected security, and much more

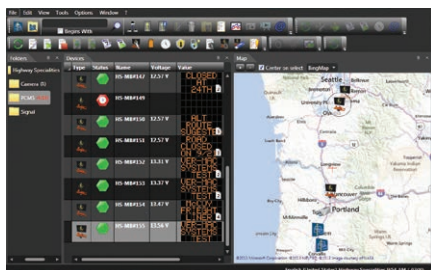


HAND-HELD CONTROLLER

The PCMS-1210QS comes with a hand-held controller

- **Quick programming** – change a message in four quick steps
- **Hand-held convenient design** – removable and interchangeable





JAMLOGIC FLEET MANAGEMENT SOFTWARE

Equip the PCMS-1210 with Ver-Mac's high-speed modem with GPS and maximize your productivity, efficiency and profitability all remotely from your office or home! The JamLogic software is FREE and you get all the updates at no charge!

- Monitor, maintain and manage your signs from any PC, laptop, tablet or smartphone
- View your equipment in a list and GPS map view
- Change a message on one or more signs simultaneously with a simple click
- View your messages and battery voltages
- Group your signs in folders (by customer, location, project... you choose!)
- Receive e-mail or text alerts – optional (low battery, cellular failure, etc.)

SEGMENTS

- Highway construction
- Department of Transportation (DOT)
- City and county
- Smart Work Zone
- Special events

DISPLAY

- Display panel: 71 in. x 133 in. (1800 mm x 3383 mm)
- 4 LEDs per pixel
- Up to 3 lines of 8 characters per line
- 5 x 7 pixels per character
- Display sign rotates 360 degrees for perfect setting
- Plug-and-play display modules for simplified maintenance

- 1-year warranty on complete trailers
- 2-year warranty on electronics manufactured by Signalisation Ver-Mac Inc.

ENERGY-EFFICIENT DESIGN

- OPTI POWER LENS – The encapsulated design maximizes each LED output to create bolder and brighter characters while utilizing less energy.
- TILT-AND-ROTATE SOLAR PANELS – Panels tilt to a 45-degree angle to provide maximum solar recharging during all four seasons.
- Designed to run 12 months in most regions without manual charging.
- Various configurations of solar panels and batteries are available to meet your needs.

HIGH-QUALITY CONSTRUCTION

- Powder coating superior finish – impact, humidity, salt spray and rust resistant
- 4 leveling jacks – for stabilization and easy transportation
- Electro-hydraulic lift mechanism – for quick and effortless deployment
- Heavy-duty plastic fenders – for durability and easy replacement
- Plastic battery boxes – to minimize battery corrosion
- Lockable control box – for security
- 2-in. (51 mm) coupler or 3-in. (76 mm) pintle eye – for easy towing

STEALTH TECHNOLOGY (OPTIONAL)

Ver-Mac's innovative Stealth Technology design will help you significantly reduce your battery maintenance and repair costs. This technology combines two great innovations:



Cleverly hidden battery compartment – deter thieves from stealing batteries



Long-lasting sealed batteries – no maintenance required

DIMENSIONS AND WEIGHT

- Overall length: 178 in. (4512 mm)
- Overall width: 86 in. (2189 mm)
- Traveling height: 108 in. (2731 mm)
- Operating height: 193 in. (4909 mm)
- Axle/suspension: 1588 kg (3,500 lb.)
- Weight (approx.): 934 kg (2,060 lb.)

OPTIONS

- Modem
- Cell plan
- Battery charger
- Tongue wheel jack
- Radar
- Data logger
- PTZ camera
- Stealth Technology

Other options are available to meet your needs.

YOUR LOCAL DISTRIBUTOR



VER-MAC